

FLEXSTAND Operator Interface

Frequently Asked Question

Issue date: 2017-03-14

Question: How can I switch to a specific plugin from my sequence?

Applies to: All FlexStand OI versions

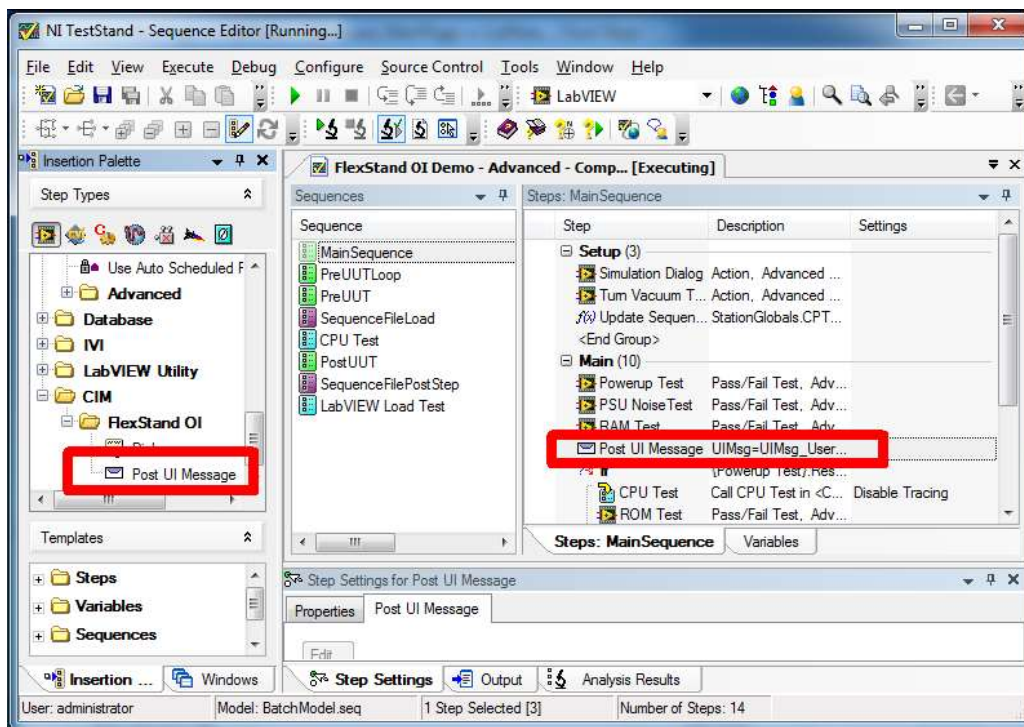
Answer:

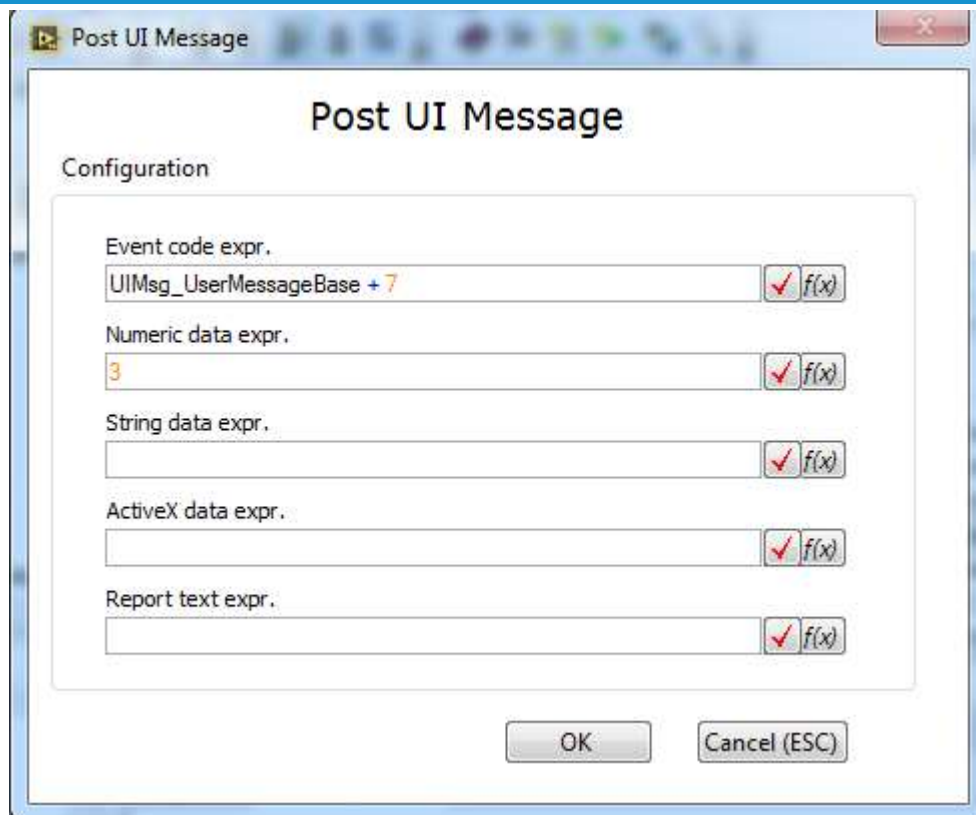
The FlexStand Operator Interface supports a number of main plugins. You can use the ones from the examples that is shipped with FlexStand or you can create your own.

You may sometimes want your sequence to automatically switch between the main plugins to give the operator a better experience of the user interface. An example could be to automatically show the report tab after the test has finished.

In order to achieve this, you will have to send a `UsrMsg` from your sequence to FlexStand whenever you want to change to a specific TAB (main plug-in). You should use the "Send UsrMsg" steptype for this. There is examples of posting `UsrMsg` in the main sequence of the Demo sequence supplied with FlexStand.

NOTE: Older versions of FlexStand does not have this steptype. For these versions use the ActiveX method shown in the Advanced example.





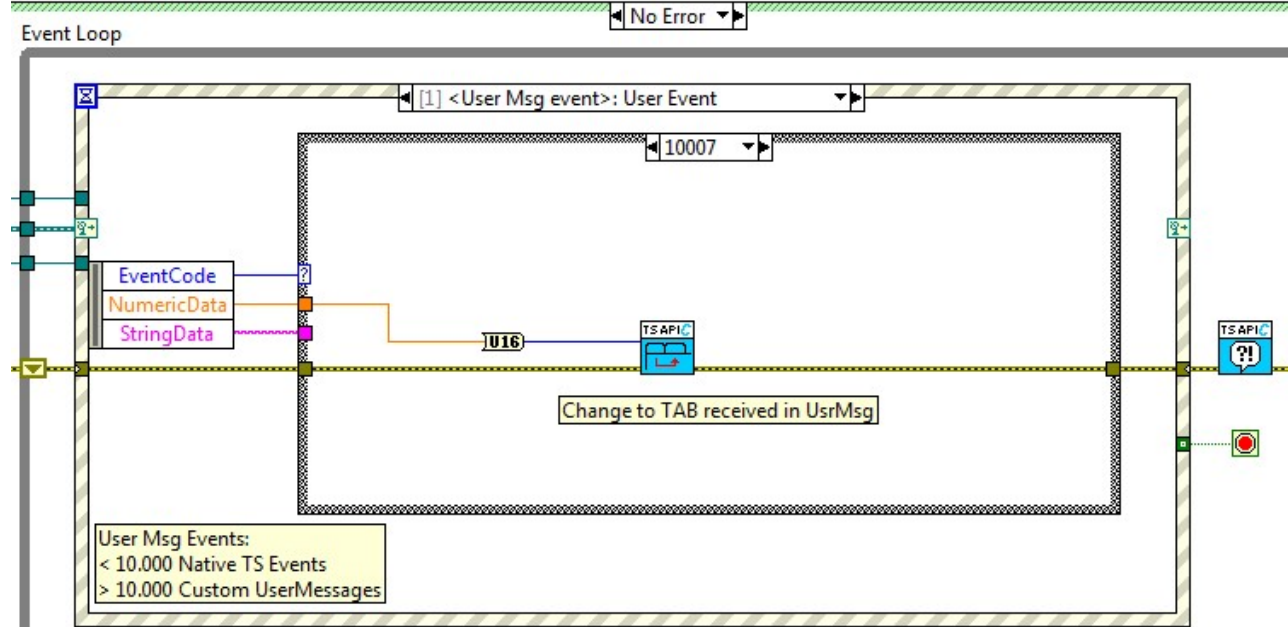
In one of your Plugins (usually in the main plugin) add the following code to receive the User Message send from the sequence. In this example I have chosen UsrMsg code 10007 but you can use any unused code above 10000.

(Make sure you select a UsrMsg code that is not used by other FlexStand pluinjs)

FLEXSTAND Operator Interface

Frequently Asked Question

em error during init?



When you run the PostUIMsg step with a code of e.g. 10007 and a numeric value of e.g. 3, FlexStand will change to TAB 3.

The API function used above can be found in the FlexStand palette:

